

# RATIONALIZED LOCAL PLANNING SYSTEM

Ernesto M. Serote

# Components of the Local Planning System

- ▶ Planning structure
- ▶ Planning mandates
- ▶ Planning process
- ▶ LGU Authority Levers

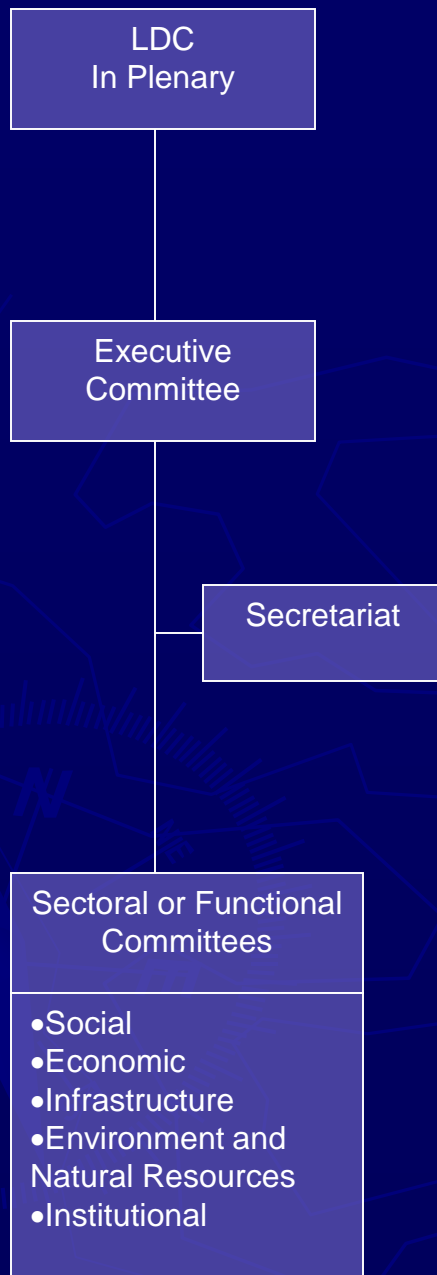
# LOCAL PLANNING STRUCTURE



# Components of the Local Planning Structure

POLITICAL	TECHNICAL
<ul style="list-style-type: none"><li>▶ Local Sanggunian</li><li>▶ Local Development Council</li><li>▶ Congressman's Representative</li><li>▶ Civil Society Organizations</li></ul>	<ul style="list-style-type: none"><li>▶ Local Planning and Development Office</li><li>▶ LGU Department Heads</li><li>▶ Local Special Bodies</li><li>▶ LDC Sectoral/Functional Committees</li><li>▶ NGA Office Chiefs in the locality</li><li>▶ Private Sector Representatives</li></ul>

## STRUCTURE OF THE LDC



### Primary Functions

#### *LDC:*

- Formulate development plans and policies;
- Formulate public investment programs;
- Appraise and prioritize programs and projects;
- Formulate investment incentives;
- Coordinate, monitor and evaluate implementation of development programs and projects.

#### *Barangay Development Councils:*

- Mobilize people's participation in local development functions;
- Prepare *barangay* development plans;
- Monitor and evaluate implementation of national or local programs and projects.

#### *Executive Committee:*

- Represent the LDC when it is not in session;
- Ensure that the LDC decisions are faithfully carried out and act on matters needing immediate attention by the LDC;
- Formulate plans, policies and programs based on principles and priorities laid out by LDC.

#### *Secretariat:*

- Provide technical support to the LDC;
- Document proceedings;
- Prepare reports;
- Other support functions as may be necessary.

#### *Sectoral or Functional Committees:*

- Assist the LDC in the performance of its functions;
- Provide the LDC with data and information essential to the formulation of plans, programs and activities;
- Define sectoral or functional objectives, set targets and identify programs, projects and activities;
- Collate and analyze data and conduct studies;
- Conduct public hearings on sectoral planning, projects and activities;
- Monitor and evaluate programs and projects; and
- Perform functions assigned by the LDC.

# THE DEVELOPMENT SECTORS & SUB-SECTORS

- 1.0 **Social Development**
  - 1.1 Population (size, growth, distribution)
  - 1.2 Social services and status of well-being
    - 1.2.1 Health
    - 1.2.2 Education, culture, recreation
    - 1.2.3 Welfare
    - 1.2.4 Housing
    - 1.2.5 Protective services
  - 1.3 Gender equity concerns
- 2.0 **Economic Development**
  - 2.1 Primary sector
    - 2.1.1 Agricultural crops
    - 2.1.2 Livestock
    - 2.1.3 Fisheries (inland, brackish, marine)
    - 2.1.4 Forestry
  - 2.2 Secondary sector
    - 2.2.1 Mining and quarrying
    - 2.2.2 Manufacturing
    - 2.2.3 Construction
    - 2.2.4 Electricity, water, gas utilities
  - 2.3 Tertiary sector
    - 2.3.1 Wholesale and retail trade
    - 2.3.2 Transportation and communication
    - 2.3.3 Finance, insurance and related activities
    - 2.3.4 Real estate
    - 2.3.5 Personal and community services
    - 2.3.6 Tourism
  - 2.4 The Informal Sector
- 3.0 **Infrastructure Development**
  - 3.1 Economic support
    - 3.1.1 Irrigation systems
    - 3.1.2 Power generation (mini-hydro)
    - 3.1.3 Roads, bridges, ports
    - 3.1.4 Flood control and drainage
    - 3.1.5 Telecommunications
  - 3.2 Social support
    - 3.2.1 Hospitals
    - 3.2.2 Schools
    - 3.2.3 Waterworks and sewerage
    - 3.2.4 Public socialized housing
    - 3.2.5 Facilities for aged, infirm disadvantaged
  - 3.3 Public administrative support
    - 3.3.1 Government buildings
    - 3.3.2 Jails
    - 3.3.3 Freedom parks
    - 3.3.4 Public assembly areas
- 4.0 **Environment and Natural Resources**
  - 4.1 Lands
    - 4.1.1 Lands of the public domain
    - 4.1.2 Private and alienable and disposable lands
    - 4.1.3 Ancestral domain
  - 4.2 Forest lands
    - 4.2.1 Protection forests
    - 4.2.2 Production forests
  - 4.3 Mineral lands
    - 4.3.1 Metallic mineral lands
    - 4.3.2 Non-metallic mineral lands
  - 4.4 Parks, wildlife and other reservations
  - 4.5 Water resources
    - 4.5.1 Freshwater (ground, surface)
    - 4.5.2 Marine waters
  - 4.6 Air quality
  - 4.7 Waste management
    - 4.7.1 Solid waste
    - 4.7.2 Liquid waste
    - 4.7.3 Toxic and hazardous
- 5.0 **Institutional Development**
  - 5.1 Organization and Management
  - 5.2 Fiscal Management
  - 5.3 Legislative Output
  - 5.4 LGU-NGO-PO linkages

## SUGGESTED SECTORAL COMMITTEE COMPOSITION

Sectoral Committee	Core Technical Working Group (Must be there)		Expanded Technical Working Group (Nice to have around)		Full-Blown Sectoral Committee (The more the merrier)	
1. SOCIAL DEVELOPMENT	MPDO Staff MHO LDC Rep (brgy) District Supervisor Sanggunian Rep	SWDO POSO LDC Rep (CSO) PTA Federation	Police Chief Local Civil Registrar PCUP Housing Board Rep Manager GSIS/SSS	Fire Marshall Population Officer Nutrition Officer NSO	Sports Organizations Religious Leaders Media Reps Inner Wheel Club Charitable Organizations	Labor Groups Senior Citizens YMCA/YWCA School Principals
2. ECONOMIC DEVELOPMENT	PESO Tourism Officer MPDO Staff LDC Rep (CSO)	Agriculturist Coop Devt Officer LDC Rep (brgy) Sanggunian Rep	Chambers of Commerce & Industry DTI Representative Bank Managers Sidewalk Vendors Transport Orgs	Trade Unions Market Vendors Cooperatives	Lions Club Rotary Club Other interested groups and individuals	Jaycees Academe
3. PHYSICAL/ LAND USE DEVELOPMENT	Municipal Engineer MPDO Staff LDC Rep (CSO) Municipal Architect	Zoning Officer LDC Rep (brgy) Sanggunian Rep	Electric Coop Rep Real Estate Developers Professional organizations Telecommunications companies	Water District Rep Academe	Other interested groups and individuals	
4. ENVIRONMENTAL MANAGEMENT	MPDO Staff LDC Rep (brgy) General Services Head	Sanggunian Rep LDC Rep (CSO) LG-ENRO	Sanitary Inspector CENRO FARMC Reps Heads of private hospitals	Academe PENRO BFAR Rep	Environmental Advocates Other interested groups and individuals	
5. INSTITUTIONAL DEVELOPMENT	MPDO Staff LDC Rep (brgy) LDC Rep (CSO) LGOO Local Administrator	Sanggunian Rep	HRDO Treasurer Budget Officer Assessor Academe	Religious groups Good Governance advocates Other interested groups and individuals		

**CORE TECHNICAL WORKING GROUP** – composed of Local Government officials and functionaries whose tasks and responsibilities address the concerns of the particular sector directly or indirectly.

**“NICE TO HAVE AROUND”** – other LGU officials, national government agencies operating in the locality, and important non-government organizations with functions and advocacies touching on the concerns of the particular sector. When added to the core TWG the resulting body becomes the Expanded TWG.

**“THE MORE THE MERRIER”** – other groups and individuals, mainly from non-government sectors, who have a stake in local development in whatever capacity, enrich and enliven the full-blown committee’s deliberations with their varied views, agendas, and advocacies.

# Sectoral Committee: Social Development

## CORE

MPDO Staff

MHO

LDC Rep (brgy.)

District Supervisor

Sanggunian Rep

SWDO

POSO

LDC Rep (CSO)

PTA Federation

## EXPANDED

Police Chief

Local Civil Registrar

PCUP

Housing Board Rep.

Manager GSIS/SSS

Fire Marshall

Population Officer

Nutrition Officer

NSO

## FULL-BLOWN

Sports Organizations

Religious Leaders

Media Reps

Inner Wheel Club

Charitable Organizations

Labour Groups

Senior Citizens

YMCA/YWCA

School Principals



# Sectoral Committee: Economic Development

## CORE

PESO

Tourism Officer

MPDO Staff

LDC Rep (CSO)

Agriculturalist

Coop Dev't Officer

LDC Rep (brgy.)

Sanggunian Rep

## EXPANDED

Chambers of Commerce  
& Industry

DTI Representative

Bank Managers

Sidewalk Vendors

Transport Orgs

Trade Unions

Market Vendors

Cooperatives

## FULL-BLOWN

Lions Club

Rotary Club

Jaycees

Academe

Other interested groups  
and individuals

# Sectoral Committee: Physical / Land Use Development

## CORE

Municipal Engineer  
MPDO Staff  
LDC Rep (CSO)  
Municipal Architect  
Zoning Officer  
LDC Rep (brgy.)  
Sanggunian Rep.

## EXPANDED

Electric Coop Rep.  
Real Estate Developers  
Professional Organizations  
Telecommunications  
companies  
Water District Rep.  
Academe

## FULL-BLOWN

Other interested groups  
and individuals

# Sectoral Committee: Environmental Management

## CORE

MPDO Staff

LDC Rep (brgy.)

General Services Head

Sanggunian Rep.

LDC Rep. (CSO)

LG-ENRO

## EXPANDED

Sanitary Inspector

CENRO

FARMC Reps

Heads of Private

Hospitals

Academe

PENRO

BFAR Rep.

## FULL-BLOWN

Environmental

Advocates

Other interested groups  
and individuals

# Sectoral Committee: Institutional Development

## CORE

MPDO Staff

LDC Rep. (brgy.)

LDC Rep. (CSO)

LGOO

Local Administrator

Sanggunian Rep.

## EXPANDED

HRDO

Treasurer

Budget Officer

Assessor

Academe

## FULL-BLOWN

Religious Groups

Good Governance

Advocates

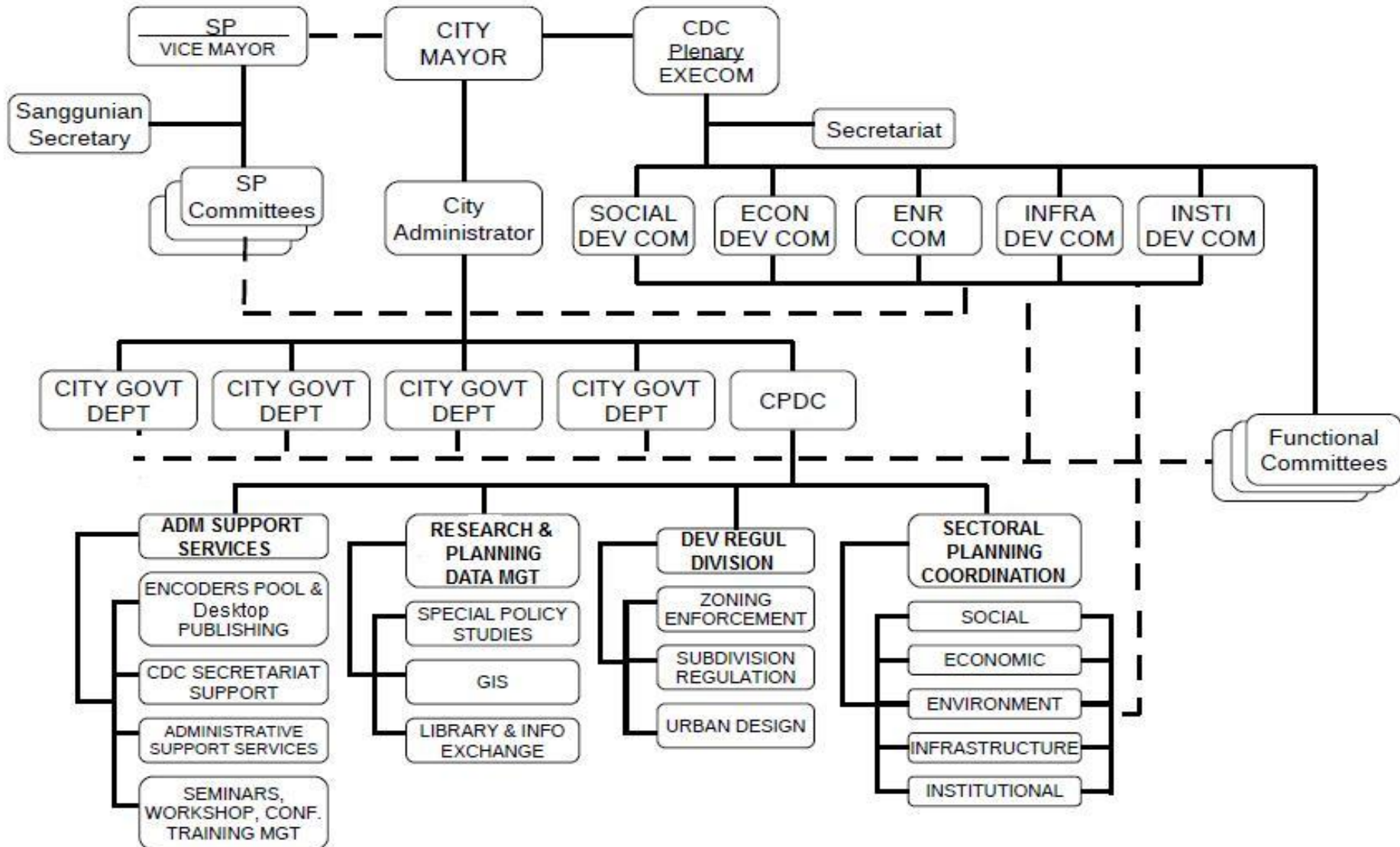
Other interested groups  
and individuals

# Inclusive Structure for Consultative and Participatory Planning

- ▶ Government and non-government sectors represented
- ▶ Within the government sector, national government agencies and LGUs involved
- ▶ Within the LGU, executive and legislative branches, elective and appointive officials engaged
- ▶ Within the LGU executive branch, LPDO and all other departments participate

*“Planning is everybody’s business”*

# Model Organizational Chart for Local Planning



The background is a dark blue map with white contour lines. A compass rose is visible in the lower-left quadrant, showing cardinal directions (N, S, E, W) and a dollar sign (\$) near the bottom. The text is centered in a large, white, bold, sans-serif font.

# PLANNING MANDATES OF LOCAL GOVERNMENTS

# The Comprehensive Land Use Plan





# Sec. 15, LGC

## *Political and Corporate Nature of LGUs.*

Every LGU is a body politic & corporate endowed with powers to be exercised by it in conformity with law. As such, it shall exercise powers as a political subdivision of the National Government and as a corporate entity representing the inhabitants of its territory.

# Sec. 2 (a), LGC

## *Declaration of Policy.*

The State and the territorial & political subdivisions of the State shall enjoy genuine & meaningful local autonomy to enable them to attain their fullest development as self-reliant communities & make them more effective partners in the attainment of national goals.

# Planning Implication for the LGU

- ▶ To manage its territory on behalf of the National State.
- ▶ To promote the general welfare of its inhabitants.

# Two comprehensive plans mandated in RA 7160

- ▶ Comprehensive Land Use Plan (CLUP) for the management of the LGU territory (Sec. 20, c)
- ▶ Comprehensive Development Plan (CDP) to promote the general welfare of all inhabitants (Sec.106 & Sec. 16)

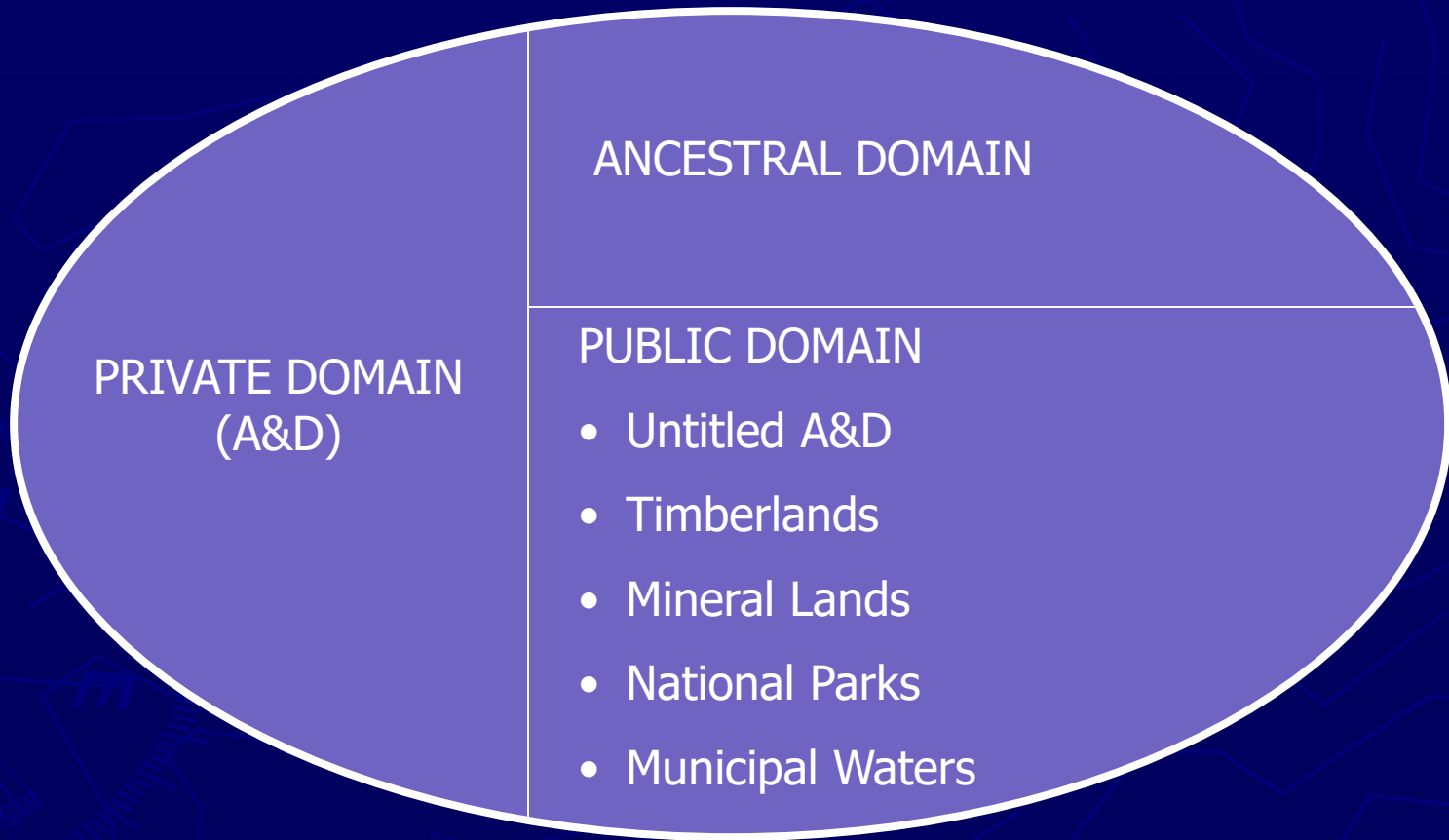
# Legal basis of the CLUP

Local government units shall, ... continue to prepare their respective *comprehensive land use plans enacted through zoning ordinances* which shall be the primary and dominant bases for the future use of land resources: *Provided*, That the requirements for food production, human settlements, and industrial expansion shall be taken into consideration in the preparation of such plans. (Sec. 20(c), RA 7160)

# Functions of the Comprehensive Land Use Plan

- ▶ Policy guide for the regulation of land uses within the LGU territory
- ▶ Skeletal-circulatory framework for the physical development of the territory
- ▶ Plan for the long-term management of the local territory

# THE CLUP AND THE MANAGEMENT OF LOCAL TERRITORIES



**LGU TERRITORY**

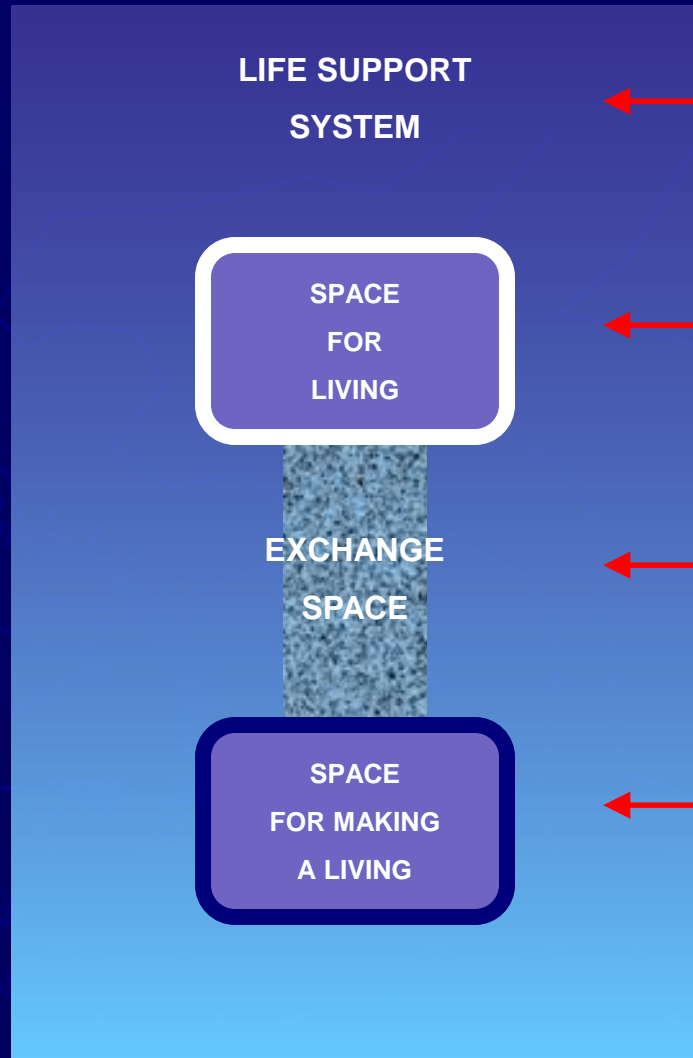
# NGA-LGU Co-management

- ▶ Local government units shall share with the National Government the responsibility in the management and maintenance of ecological balance within their territorial jurisdiction, subject to the provisions of this Code and national policies. (Sec. 3(i), RA 7160)



# The 4 Land Use Policy Areas

## GENERAL LAND USE CATEGORIES



ANY TERRITORIAL UNIT

## GENERAL LAND USE POLICY AREAS

### *PROTECTED AREAS*

- NIPAS
- Non-NIPAS including Heritage sites
- Protected agricultural
- Environmentally constrained

### *SETTLEMENT AREAS*

- Urban (town center/s)
- Rural (upland, coastal, lowlands)
- Indigenous people's settlements

### *INFRASTRUCTURE AREAS*

- Transport network
- Social infrastructure
- Economic infrastructure
- Administrative support

### *PRODUCTION AREAS*

- Agricultural
  - Croplands
  - Fishery
  - Livestock
  - Forestry
- Industrial
- Commercial
- Tourism

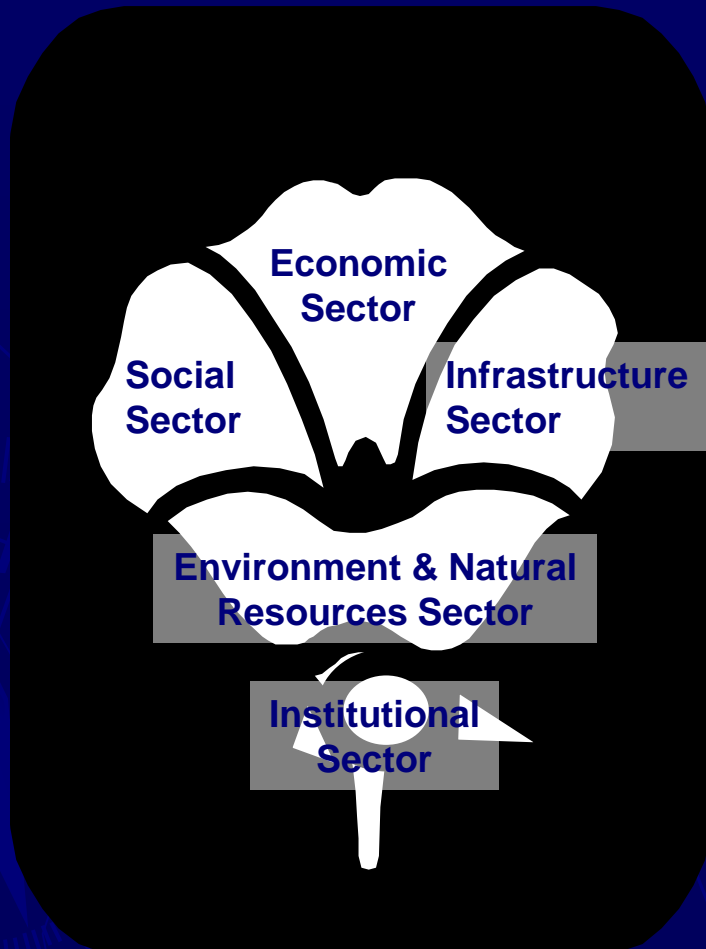
# **The Comprehensive Development Plan**



# Legal basis of the CDP

- ▶ Each local government unit shall have a comprehensive multi-sectoral development plan to be initiated by its development council and approved by its sanggunian... the development council shall assist the sanggunian in setting the direction of economic and social development, and in coordinating development efforts within its territorial jurisdiction. (Sec. 106, RA 7160)

# Comprehensive development as process and as outcome



# Functions of the CDP

As a guide to policies and programs to promote the general welfare of all inhabitants in the LGU territory. Every local government unit shall ensure and support, the:

1. preservation and enrichment of culture,
2. promotion of health and safety,
3. enhancement of the right of the people to a balanced ecology,
4. development of appropriate and self-reliant scientific and technological capabilities,
5. improvement of public morals,
6. enhancement of economic prosperity and social justice,
7. promotion of full employment among their residents,
8. maintenance of peace and order, and
9. preservation of comfort and convenience of their inhabitants.

(Section 16, RA 7160)

# Functions of the CDP

As a policy statement

- demands involvement by public officials
- facilitates multi-stakeholder participation in and understanding of the planning processes
- offers consistent and stable guide for legislators (policy making), administrators (policy implementation) and courts (policy interpretation)

# Functions of the CDP

As a guide to decision-making

- by the CDC and the LFC about investment funds in the annual budget
- by the mayor, administrator, and department heads about priority projects to implement
- by the planning office regarding what outcomes and impacts to monitor
- by the private sector about how to respond to interventions and policies of the local government

# Functions of the CDP

As a guide to more detailed master planning

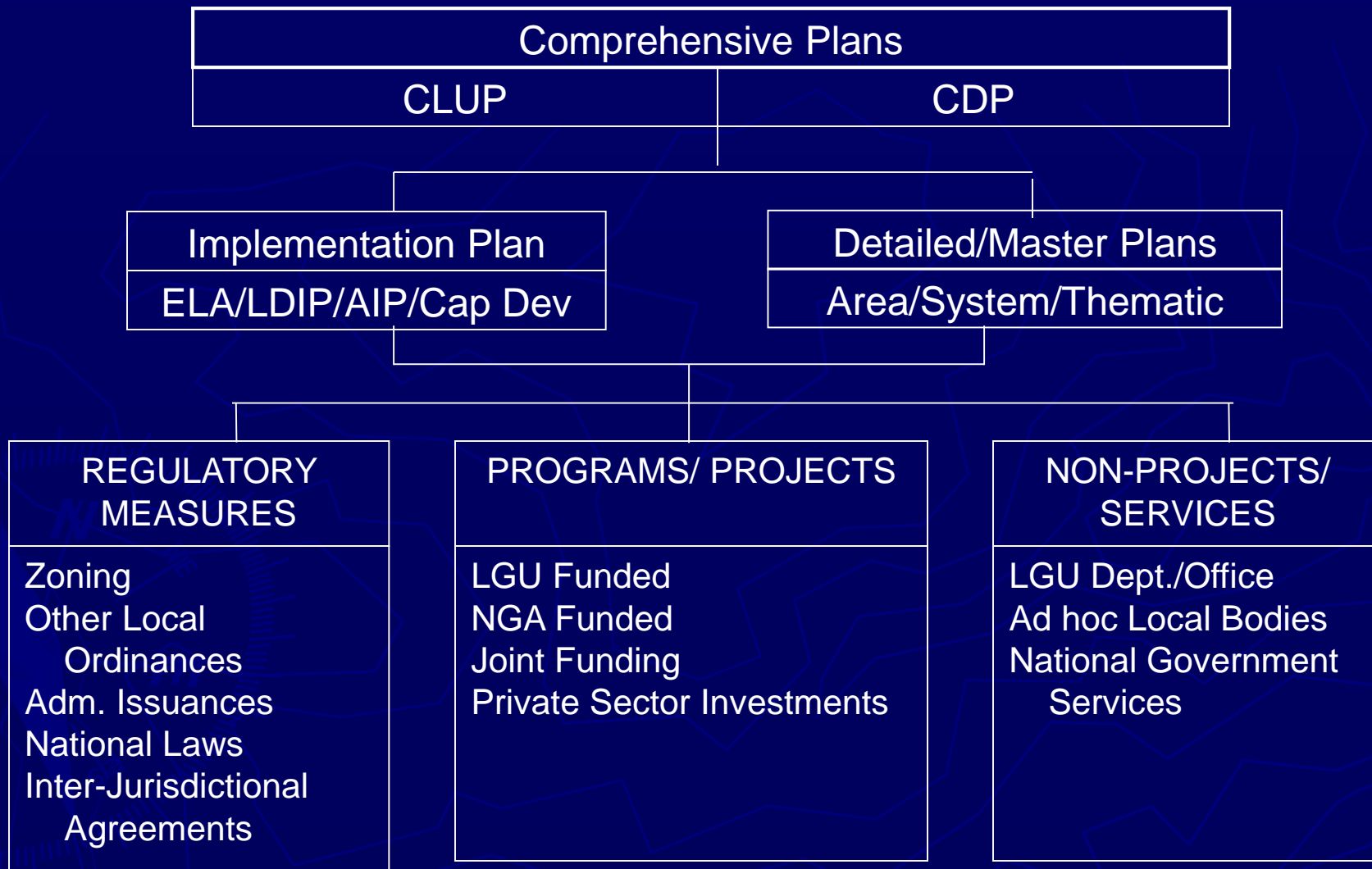
- helps comprehensive planners evaluate proposals of specialist planners
- helps specialist planners in their deliberations
- helps specialist agencies coordinate their activities to ensure that their proposals are reinforcing rather than conflicting



The background of the slide is a dark blue color with a faint, light blue topographic map overlay. The map shows various landmasses and water bodies. In the bottom-left corner, there is a compass rose with a blue needle pointing towards the top-left. The compass rose has labels for 'N' (North), 'E' (East), 'S' (South), and 'W' (West).

**Other plans that LGUs  
have to prepare**

# LGU Family of Plans



# Thematic Plans: Examples

- ▶ Local Poverty Reduction Action Plan
- ▶ Disaster Risk Reduction and Management Plan
- ▶ Gender and Development Plan
- ▶ Local Entrepreneurship Development Plan
- ▶ Culture and Arts Plan

# Area Plans: Examples

- ▶ Forest Management Plan
- ▶ Heritage Conservation Plan
- ▶ Coastal Resource Management Plan
- ▶ Ancestral Domain Sustainable Development and Protection Plan
- ▶ Watershed Management Plan

# System Plans: Examples

- ▶ Solid Waste Management Plan
- ▶ Rapid Transit System Plan
- ▶ Sewerage Master Plan
- ▶ Integrated Communication Technology Plan
- ▶ Open Space Network Plan

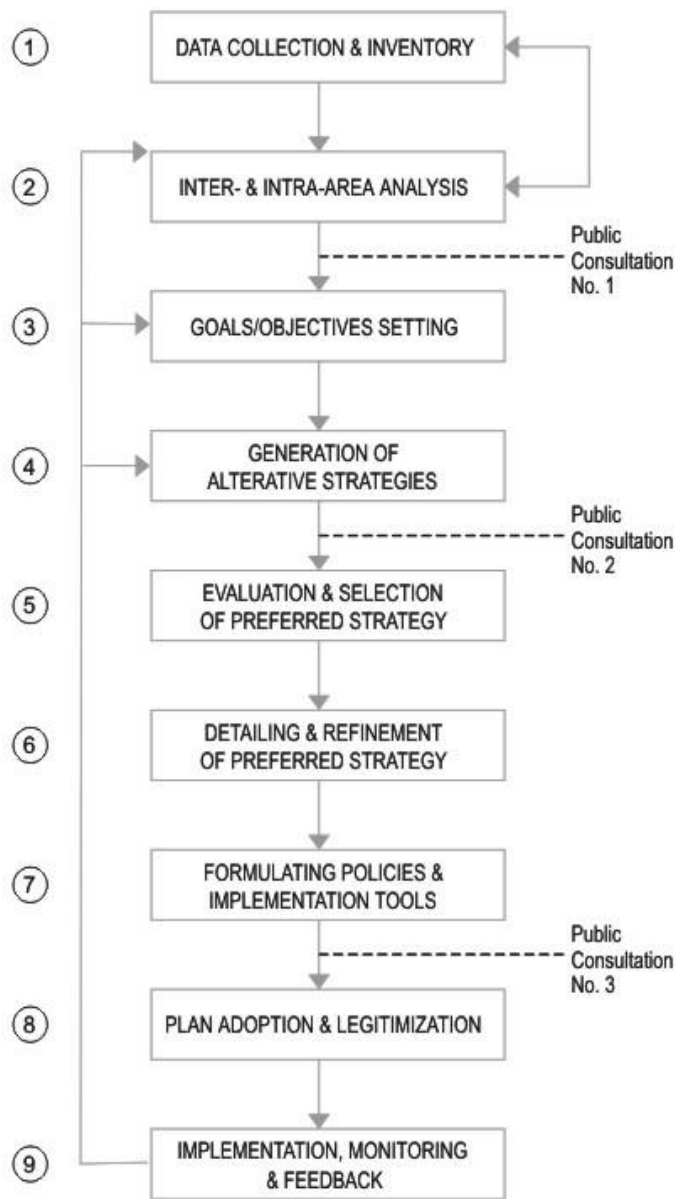
# Types of Plans and Responsible Local Planning Bodies

Type of Plans	Planning Body Concerned	
	Sectoral Committee	Functional Committee
Area Plans	<ul style="list-style-type: none"> <li>▪ Forest Management</li> <li>▪ Protected Area Mgt</li> <li>▪ Food &amp; Feed Crop Devt</li> <li>▪ Sloping Area Agri Devt</li> </ul>	<ul style="list-style-type: none"> <li>▪ Coastal Resource Mgt</li> <li>▪ Watershed Management</li> <li>▪ Urban Redevelopment</li> <li>▪ ADSDPP</li> </ul>
System Plans	<ul style="list-style-type: none"> <li>▪ Water Supply System</li> <li>▪ Wastewater Mgt</li> <li>▪ Drainage Master Plan</li> <li>▪ Flood Control System</li> </ul>	<ul style="list-style-type: none"> <li>▪ Traffic Management</li> <li>▪ Transport Management</li> <li>▪ Irrigation System Plan</li> <li>▪ Solid Waste Mgt Plan</li> </ul>
Thematic Plans	<ul style="list-style-type: none"> <li>▪ SMED Plan</li> <li>▪ Culture and Arts Promotion</li> <li>▪ CPC Action Plan</li> <li>▪ Food Security Plan</li> <li>▪ Entrepreneurship Program</li> </ul>	<ul style="list-style-type: none"> <li>▪ Local Tourism Plan</li> <li>▪ Local Poverty Action Plan</li> <li>▪ Disaster Risk Mgt Plan</li> <li>▪ Gender and Devt Plan</li> <li>▪ Public Order and Safety Plan</li> </ul>

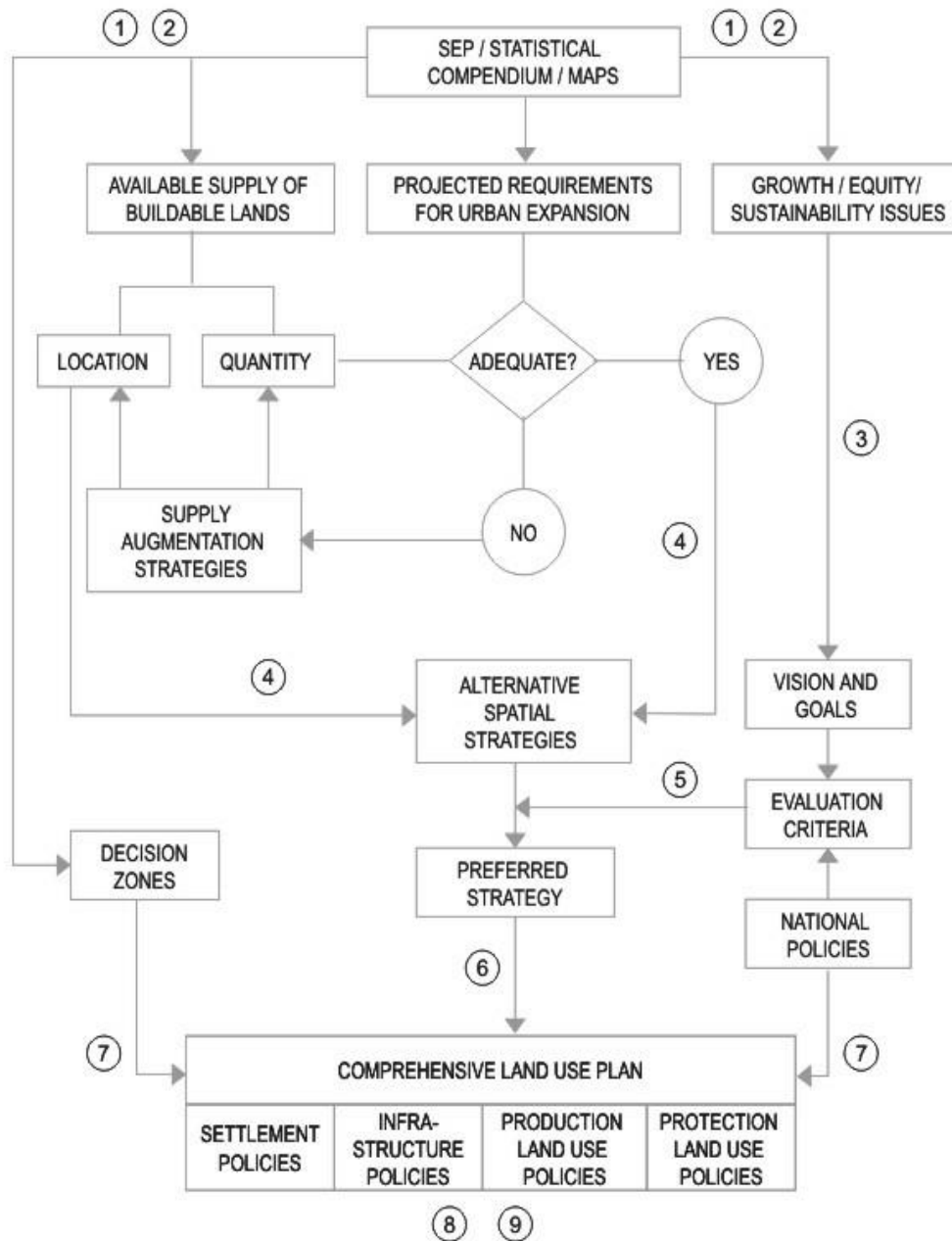
# Planning Processes



## THE GENERAL PLANNING PROCESS

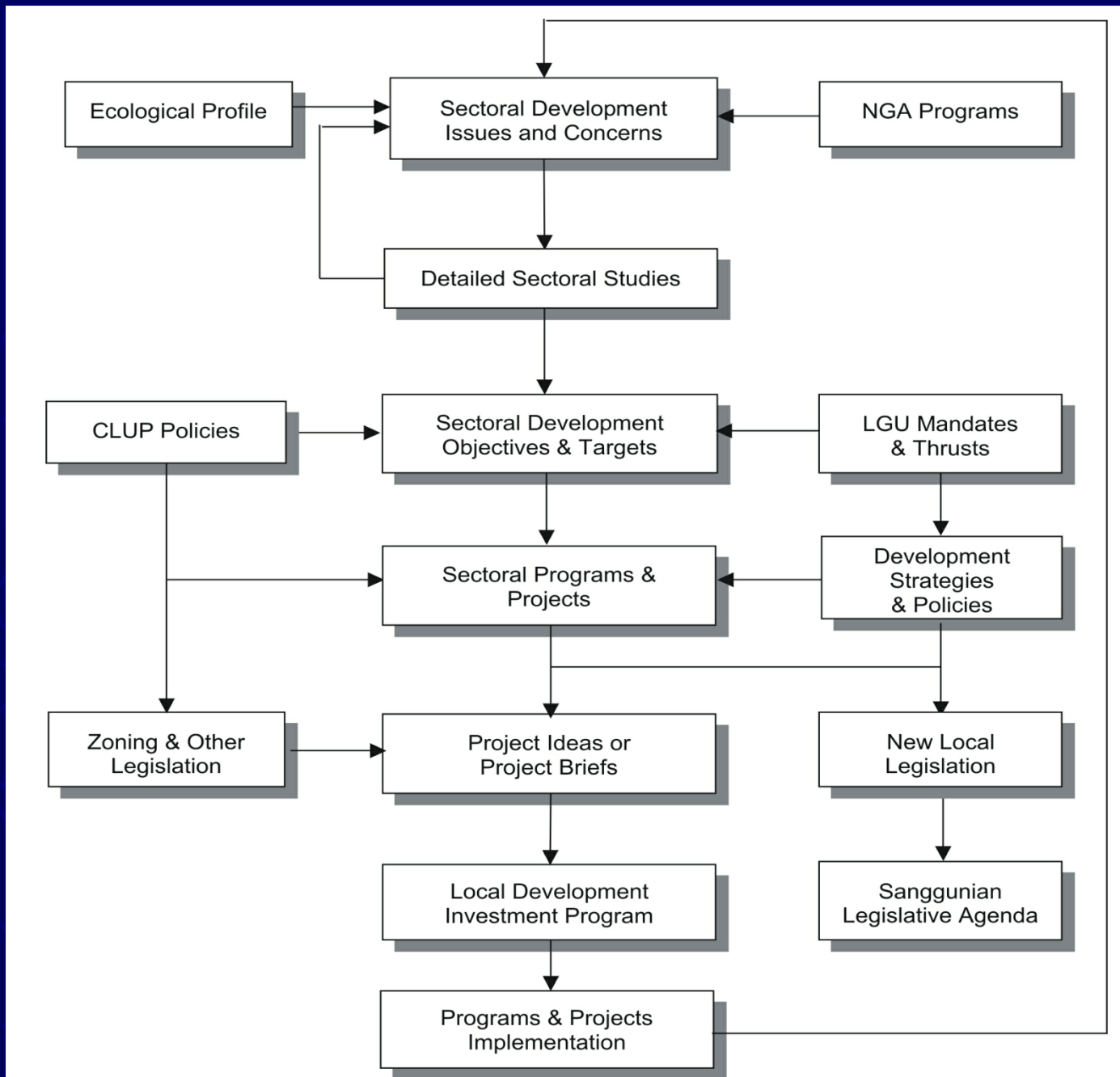


## LOCAL COMPREHENSIVE LAND USE PLANNING PROCESS





# SECTORAL DEVELOPMENT PLANNING PROCESS



VISION STATEMENT

VISION ELEMENT (BY SECTOR)

ELEMENT DESCRIPTORS

SUCCESS INDICATORS OF EACH DESCRIPTOR

CURRENT REALITY

VISION – REALITY GAP

SECTORAL GOALS

SECTORAL OBJECTIVES AND TARGETS

TIME/RESOURCE CONSTRAINTS

- ECOLOGICAL PROFILE
- STATISTICAL COMPENDIUM
- DECISION ZONES
- PROBLEM/ SOLUTION MATRIX

CLUP POLICIES

SECTORAL STRATEGIES/POLICIES

SECTORAL PROGRAMS/PROJECTS

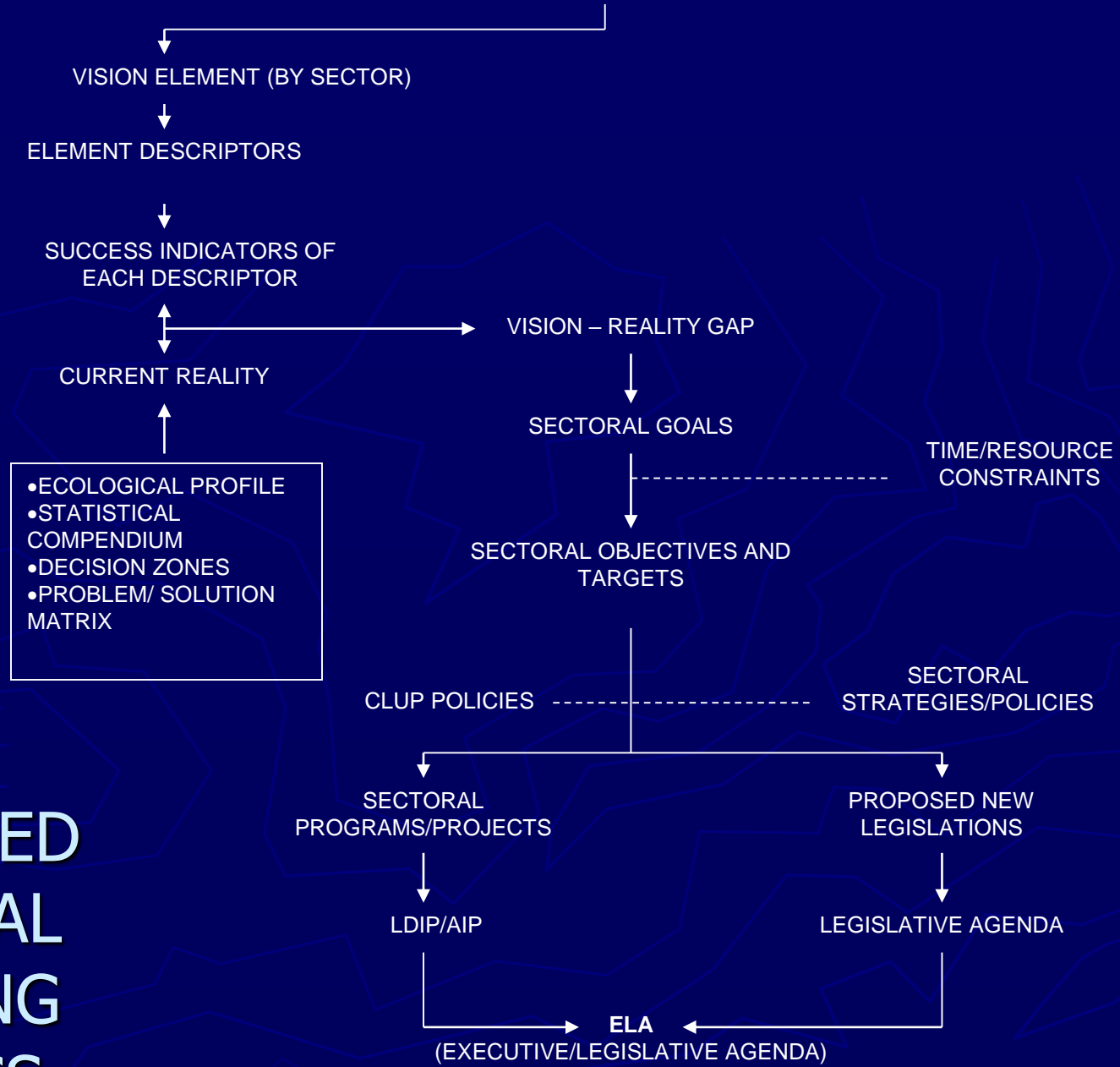
PROPOSED NEW LEGISLATIONS

LDIP/AIP

LEGISLATIVE AGENDA

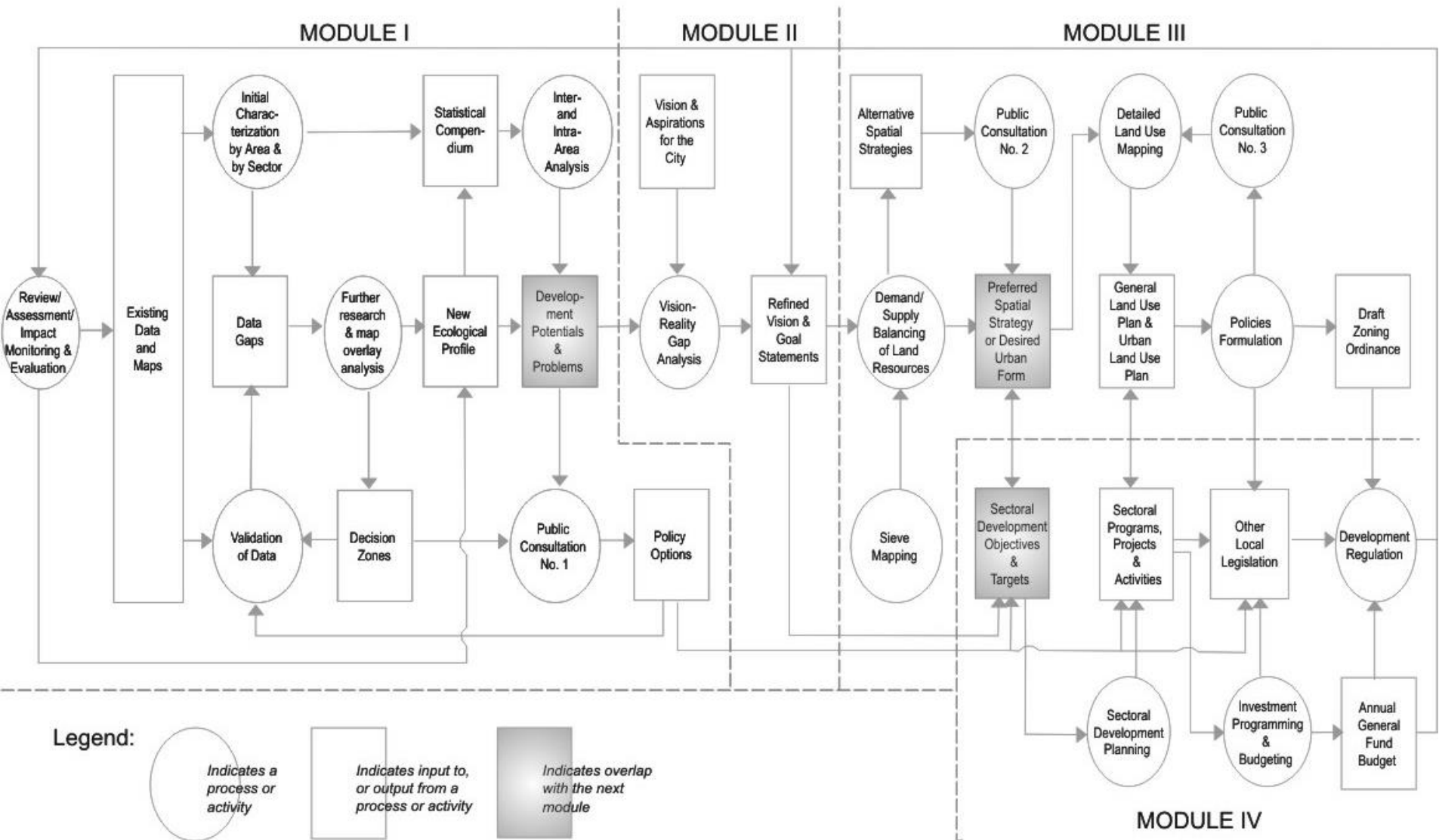
ELA  
(EXECUTIVE/LEGISLATIVE AGENDA)

# SIMPLIFIED SECTORAL PLANNING PROCESS

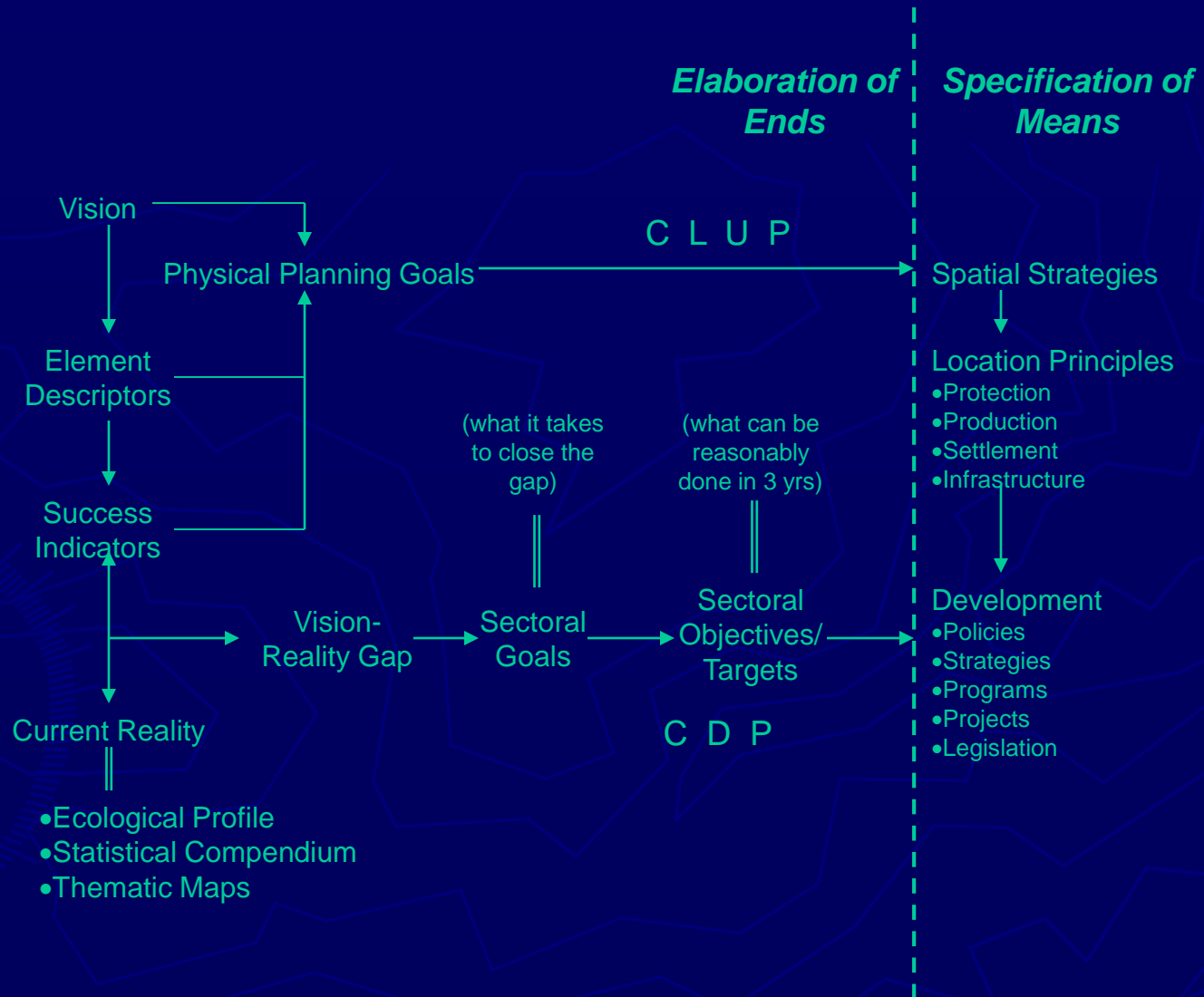


# The CLUP-CDP Process Flow

Chart prepared by Ernesto M. Serote



# Simplified CLUP-CDP Planning Process



# LGU Authority Levers for Plan Implementation

- ▶ Regulation
- ▶ Taxation
- ▶ Public Investment
- ▶ Private Investment Incentives
- ▶ Co-management

# Regulation

- ▶ Zoning
- ▶ Subdivision Regulation
- ▶ Building Regulation
- ▶ Environmental Law Enforcement

# Taxation

- ▶ Basic Taxes
- ▶ Special Levies on Property
  - Special Education Fund
  - Idle Lands Tax
  - Special Benefit Levy

# Public Investment

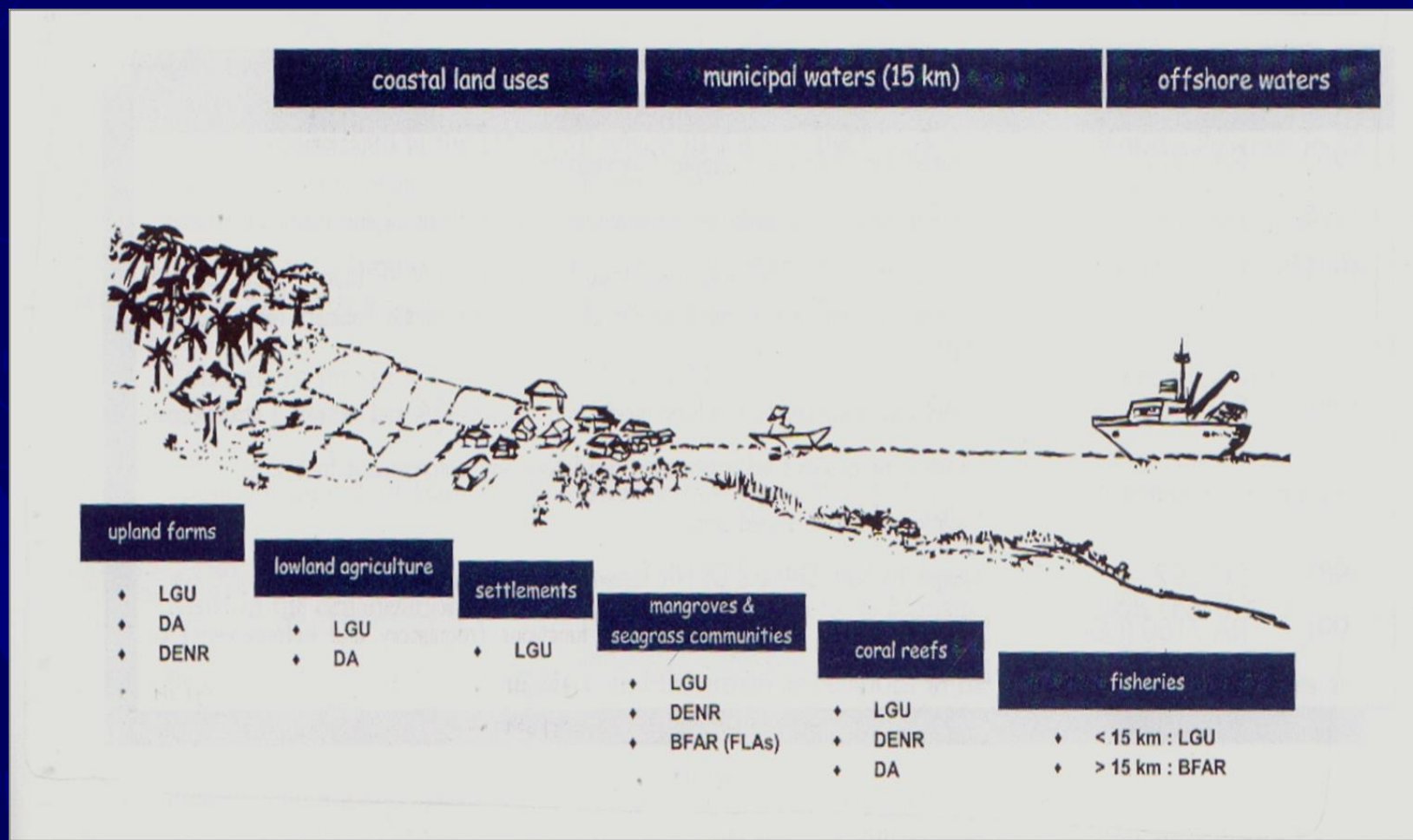
- Local Development Investment Program
- Annual Investment Program

# Private Investment Incentives

- Fiscal Policies
- Joint Ventures
- B-O-T Scheme



# NATIONAL-LOCAL GOVERNMENT CO-MANAGEMENT OF THE ENVIRONMENT AND NATURAL RESOURCES



**Thank you**

